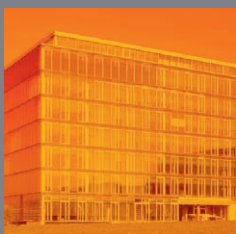




**TERRITOIRE  
ENERGIE**

# together towards factor 2

## Low Consumption Buildings & high level of comfort



### CHARACTERISTICS

- Thermal comfort in Winter, mid-season and Summer
- Hygrometric comfort
- Visual comfort
- Low energy consumptions
- Good air quality indoors

### PARTICULARITIES

- Homogeneous ambient temperatures
- Heating emitted by low temperature devices
- Control of change of air
- Low heat loss through the envelope
- Use of alternative and/or natural energy sources

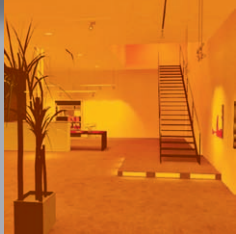


### FOR THE USER

- **Comfort at work guaranteed** (thanks to the high quality of the building's envelope and a systematic change of air)
- **Flexibility in the occupation of the premises**
- **Long-lasting technical equipment and building**
- **Control of running costs**



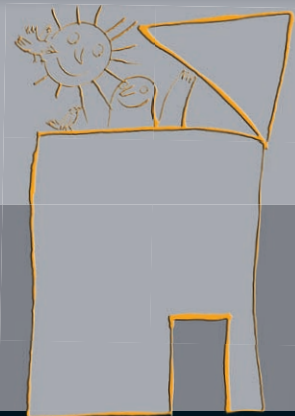
What is more, it is easy to earn the BBC - MINERGIE®, BREAM, LEED,... labels or even, with a larger and more rigorous conception, the MINERGIE-P®, MINERGIE-ECO®/ P-ECO®, PHP labels.



## Developing tools in decision-making

Choosing the best solution(s) among a variety.

- Lighting planning
- Energy audit
- Feasibility study of the implementation of an energy producing process out of sustainable, classical or alternative resources ...



## Assistance to contracting authority

For any type of project and at any of its phase (Energy in general, building's hygrothermy, Process).



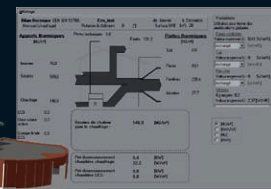
### TE CAN INTERVENE

- from the study of the relevance of the construction of a building to its use
- in urban planning projects
- to carry out long-term studies

TE IS A DESIGN OFFICE EXCLUSIVELY COMPOSED OF ENGINEERS.

TE GIVES ITS SUPPORT TO TERRITORIAL COMMUNITIES, ASSOCIATIONS OF COMMUNES, PUBLIC INSTITUTIONS AND SOCIAL PARTNERS.

TE ALSO INTERVENES IN INDUSTRY AND PRIVATE COMPANIES.



**Thermal audit  
& computer simulation**



**TERRITOIRE  
ENERGIE**

"Bien-Ensemble  
C'est tout."

210, avenue de Verdun - 39100 DOLE - +33 (0)6 98 81 88 35

[www.territoire-energie.fr](http://www.territoire-energie.fr)